



car underbody coating - heat resistant lacquers - special lacquers -
putty - car care - technical sprays - tuning line - car repair universal

AUTOMOTIVE

INDEX

UNIVERSAL CAR REPAIR	5
HEAT RESISTANT	11
SPECIALITY PAINTS	12
PUTTY	14
CAR UNDERBODYCOATING	17
CAR CARE BLACK LINE	20
TECHNICAL PROTECTION	29
TECHNICAL LUBRICATION	30
TECHNICAL CLEANING	31
TECHNICAL TOOL	35
TECHNICAL ASSEMBLY	37
TECHNICAL REFILLABLE	39
TUNING LINE	41

UNIVERSAL CAR REPAIR	5
KOMPAKT CAR REPAIR PAINT	5
DEGREASER	5
SANDING KEY AID	6
PRIMER	6
FILLER	7
SPRAY PUTTY	7
PRIMER FILLER	7
ZINC SPRAY	7
ALU-ZINC SPRAY	7
SPOT BLENDER	8
CLEAR VARNISH	8
KOMPAKT CLEAR VARNISH	8
BLACK & WHITE BASICS PAINT	9
WHEEL SPRAY	9
PLASTIC PRIMER	10
BUMPERSPRAY	10
VINYL SPRAY	10
HEAT RESISTANT	11
HEAT RESISTANT PAINTS	11
HEAT RESISTANT CLEAR VARNISH	11
SPECIALITY PAINTS	12
CHROME PAINT	12
HAMMERFINISH PAINT	12
METALLIC PAINT	13
FLUORESCENT PAINT	13
PUTTY	14
FIBRE PUTTY FILLED	14
FIBRE PUTTY UNFILLED	14
POLYESTER REPAIR SET	14
POLYESTER PUTTY	14
FINE PUTTY	15
BUMPER REPAIR PUTTY	15
PLASTIC REPAIR PUTTY	15
METAL PUTTY	15
POLYESTER RESIN	16
FIBREGLASS	16
FINISHING PUTTY	16
HARDENER	16
POLYESTER PUTTY PROFI	16
STONE CHIP SPRAY	17
WAXCOATING	17
CAR UNDERBODYCOATING	18
BITUMEN BASED UNDERCOATING	18
SEALANT	18
HOLLOW SECTION WAX	18
CAR CARE BLACK LINE	20
COCKPITSPRAY'S	21
INTERIOR CLEANER	22
AIR REFRESHER 'ONE SHOT'	22
AIRCO REFRESHERS	22
WHEEL CLEANER	23
TYRE SHINE	23
TYRE REPAIR	23
WHEEL CLEANER	23
WHEEL PROTECT WAX	23
GLASS CLEANER	24
ANTI CONDENS	24
GLASS CLEANER	24
RAIN AWAY	24
INSECT CLEANER	25
SHAMPOO	25
SUPER SHAMPOO & WAX	25
TAR & RESIN	25
SPEED WAX	25
SCRATCH AWAY	25

CHROME POLISH	26
POLISHES	26
SCRATCH AWAY	26
LEATHER CONDITIONERS	27
TEXTILE CLEANER	27
RUBBER & PLASTIC CONDITIONER	27
BUMPER BLACK	27
TECHNICAL PROTECTION	29
V-BELT SPRAY	29
CABLE PROTECT	29
IMPREGNATION SPRAY	29
ANTI CORROSION PRIMER	29
SILICONE SPRAY	29
ELEKTRO PROTECT	30
TECHNICAL LUBRICATION	30
PTFE DRY	30
PTFE OIL	30
WHITE GREASE	30
INDUSTRIAL CHAIN GREASE	31
MULTISPRAY	31
TECHNICAL CLEANING	31
TEXTILE CLEANER	31
COLD DEGREASER	31
TYRE CLEANER	32
STAINLESS STEEL CLEANER	32
GLASS CLEANER	32
CONTACT CLEANER	32
ENGINE CLEANER	32
AIRCO CLEANER	33
INDUSTRIAL CLEANER	33
CARBURETTOR CLEANER	33
MULTI FOAM	33
CITRUS CLEANER	33
POWER BRAKE CLEANER	34
DPF CLEANER	34
EGR CLEANER	34
TECHNICAL TOOL	35
COLD CHEWING GUM FREEZER	35
GASKET REMOVER	35
ANTI-WELDING SPRAY	35
QUICK STARTER	35
LEAK DETECTOR	35
CUT & DRILL LUBRICANT	35
DUST REMOVER	36
FREEZER ELECTRONIC	36
PAINT REMOVER	36
TECHNICAL ASSEMBLY	37
BLACK OIL	37
COPPER SPRAY	37
VASELINE SPRAY	37
PENETRATING OIL	37
GLUE	37
SHOCK OIL	38
FREEZER	38
CERAMIC GREASE	38
TAR SPRAY	38
ASSEMBLY GREASE	38
TECHNICAL REFILLABLE	39
ALU PRESSURE CAN	39
DRUMS	40
TUNING LINE	41
BRAKE CALIPER SET	41
BRAKE CALIPER SPRAY	41
BACKLIGHT	41
ENGINE PAINT	42
REMOVABLE COATING	42

KOMPAKT CAR REPAIR PAINT

Car repair paints are based on the original car colour codes, for renewal and repair of car parts. The appropriate Kompakt colour can be identified by referring to the Kompakt Colour Info Book and the Kompakt Colour Fan. Kompakt is available in a 400ml aerosol and a 12ml touch-up.



Description	Contents	Part No.	PU
Kompakt Non-Metallic Colours	400 ml	41000 - 46999	6
Kompakt Metallic Colours	400 ml	51000 - 56000	6
Kompakt Non-Metallic Colours	12 ml	941000 - 946999	10
Kompakt Metallic Colours	12 ml	951000 - 956000	10



Description	Contents	Part No.	EAN-code	PU
Kompakt Book		DUN243	8711347185320	1
Kompakt Colour Fan		K4016	8711347185337	1
Spray nozzle set		237881	4048500237881	1



Search
colorcode



DEGREASER

Description	Contents	Part No.	EAN-code	PU
600 Degreaser	200 ml	00185	8711347001859	12
600 Degreaser	500 ml	00186	8711347001866	12

SANDING KEY AID

Fast drying black control lacquer which helps sanding.



Description	Contents	Part No.	EAN-code	PU
Sanding Aid Black	500 ml	04057	8711347066582	6

STEP 1



STEP 2



STEP 3



STEP 1: Remove loose old lacquer and rust. Sand the surface to be treated. Damages, if any, can be treated with an appropriate putty.

STEP 2: The surface should be clean, dry and free of grease. Apply the primer in several thin layers. Shake the can after each layer is applied.

STEP 3: The surface should be clean, dry and free of grease. Apply one thin layer of Sanding Key Aid (control lacquer) and allow to dry. Sand the surface till the control lacquer is completely removed. In case of irregularities, the surface will stay black. These irregularities may be treated with an appropriate filler, before repeating the procedure with Sanding Key Aid.

PRIMER

Fast drying primer that primes both treated and untreated surfaces including wood, metal, aluminium, glass and stone. The primer offers excellent coverage and filling properties and prevents rust. The primer is easy to sand, both wet and dry (from grain 400) and can be resprayed with all paints. MoTip Primer is available in a 500ml aerosol and a 12ml touch-up.

Description	Contents	Part No.	EAN-code	PU
Primer Black	500 ml	04052	8711347206407	6
Primer Grey	500 ml	04054	8711347040544	6
Primer Red	500 ml	04055	8711347040551	6
Primer White	500 ml	04056	8711347040568	6
Primer Grey	12 ml	900101	8711347920013	10
Primer Grey	150 ml	00101	8711347001019	12
Primer White	150 ml	00102	8711347001026	12
Primer Red	150 ml	00103	8711347001033	12



FILLER



Fast drying filler offering excellent coverage for blemishes on treated and untreated surfaces including wood, metal and aluminium. The filler has excellent filling properties and adhesion and prevents rust. MoTip Filler is easy to sand, both wet and dry (from grain 400) and is re-sprayable with all lacquer systems.

Description	Contents	Part No.	EAN-code	PU
Filler	400 ml	04064	8711347040643	6

SPRAY PUTTY



Fast drying spray putty with excellent filling properties and coverage to fill small irregularities in surfaces, treated and untreated, of wood, metal and aluminium. Spray putty has excellent adhesion and prevents rust. MoTip Spray Putty is easy to sand, both wet and dry (from grain 400).

Description	Contents	Part No.	EAN-code	PU
Spray Putty	400 ml	04062	8711347040629	6

PRIMER FILLER



Fast drying primer filler with excellent coverage to fill small irregularities in surfaces, treated and untreated, of wood, metal and aluminium. The primer filler has excellent filling properties and adhesion and prevents rust. MoTip Primer Filler is easy to sand, both wet and dry (from grain 400) and is re-sprayable with all lacquer systems.

Description	Contents	Part No.	EAN-code	PU
Primer Filler	500 ml	04053	8711347040537	6

ZINC SPRAY



Fast drying zinc spray with good filling properties and excellent adhesion to treat galvanised and untreated steel. Zinc spray has outstanding cathodic corrosion prevention, is spot-weldable and is resistant to petrol, chemicals and weather influences. MoTip Zinc Spray is heat resistant to 350°C.

Description	Contents	Part No.	EAN-code	PU
Zinc Spray	400 ml	04061	8711347040612	6

ALU-ZINC SPRAY



Fast drying alu-zinc spray with good filling properties and excellent adhesion to treat galvanised and untreated steel. Alu-Zinc spray offers outstanding cathodic corrosion prevention, is spot-weldable and is resistant to petrol, chemicals and weather influences. MoTip Alu-Zinc Spray is heat resistant to 250°C.

Description	Contents	Part No.	EAN-code	PU
Alu-Zinc Spray	400 ml	04059	8711347040599	6

SPOT BLENDER

A mixture solvents to help level the surface when carrying out spot repairs. The blending properties of the spray enable a smooth blend between new and old paint to be achieved. MoTip Spot Blender has a fine and precise jet-spray which enables an instant and invisible result.



Description	Contents	Part No.	EAN-code	PU
Spot Blender	150 ml	00108	8711347182510	12



Sand the surface. Protect and mask the surrounding surfaces with tape before applying MoTip Primer. Then apply the appropriate Motip Kompakt Paint within the masked-off area.

Protect the surroundings even more generously, apply a finishing layer of MoTip Kompakt Clear Varnish. In order to prevent crossing, spray within the protected area. After hardening of the clear varnish remove the tape. Make the surface dust-free with a clean, dry cloth. Spray the surface with Spot Blender, till the overspray blends like a film.

CLEAR VARNISH

Fast drying acrylic lacquer with a lasting gloss for treated and untreated surfaces including metal, aluminium, glass, stone and various types of plastic. The varnish prevents rust, offers excellent adhesion, and is scratch-resistant, shock proof, resistant to petrol, chemicals and weather influences. It is available in both 150ml and 500ml aerosols and also a 12ml touch-up.

Description	Contents	Part No.	EAN-code	PU
Clear Varnish high gloss	500 ml	04009	8711347040094	6
Clear Varnish matt	500 ml	04000	8711347236565	6
Clear Varnish high gloss	12 ml	902001	8711347920068	10
Clear Varnish high gloss	150 ml	02001	8711347020010	12



KOMPAKT CLEAR VARNISH

High quality, fast drying finish to create a high-gloss preservative for all MoTip Kompakt car repair lacquers. The clear lacquer has excellent filling properties, excellent adhesion and an excellent flow. The clear lacquer is scratch free and shock proof, is resistant to weather influences and is UV resistant and non-fading. Kompakt Clear Lacquer is available in an aerosol of 400 ml.

Description	Contents	Part No.	EAN-code	PU
Clear Varnish high gloss	400 ml	50000	8711347178735	6





BLACK & WHITE BASICS PAINT

Fast drying acrylic paint offering excellent coverage and adhesion for treated and untreated surfaces including wood, metal, glass and plastic. The paint has a lasting colour and good surface hardness. It is resistant to petrol, chemicals and weather influences and is also non-fading and UV resistant. It is available in a 500ml aerosol and a 12ml touch-up.

Description	Contents	Part No.	EAN-code	PU
High Gloss White Paint	500 ml	04004	8711347040049	6
High Gloss White Paint	12 ml	900107	8711347920044	10
Matt White Paint	500 ml	04002	8711347172481	6
High Gloss Black Paint	500 ml	04005	8711347040056	6
High Gloss Black Paint	12 ml	900105	8711347920020	10
Matt Black Paint	500 ml	04006	8711347040063	6
Matt Black Paint	12 ml	900106	8711347920037	10
Satin Matt Black Paint	500 ml	04001	8711347040018	6



WHEEL SPRAY

Fast drying acrylic paint with lasting gloss to renew and repair steel and other light metal rims and hubcaps. Wheel spray offers good coverage and excellent adhesion plus good surface hardness. It is resistant to petrol, chemicals, weather influences and is also UV-resistant and non-fading. Wheel spray is resistant to wear and scratches. It is available in a 500ml aerosol and a 12ml touch-up.

Description	Contents	Part No.	EAN-code	PU
Wheel Spray White	500 ml	04003	8711347040032	6
Wheel Spray Gold	500 ml	04008	8711347040087	6
Wheel Spray Steel Wheel	500 ml	04010	8711347040100	6
Wheel Spray High Gloss Black	500 ml	04018	8711347209729	6
Wheel Spray Matt Black	500 ml	04019	8711347209705	6
Wheel Spray Silver	500 ml	04007	8711347040070	6
Wheel Spray Silver	12 ml	900104	8711347066599	10



PLASTIC PRIMER

Fast drying, transparent plastic primer for untreated plastic surfaces. Motip Plastic Primer offers excellent adhesion, does not require sanding and can be resprayed with all paints.

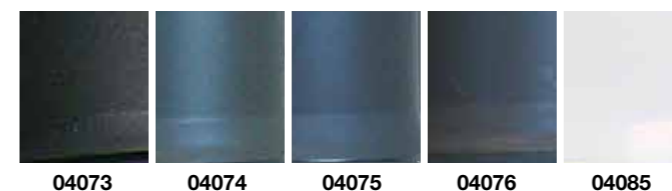
Description	Contents	Part No.	EAN-code	PU
Plastic Primer	400 ml	04063	8711347040636	6



BUMPERSPRAY

Bumperspray with excellent coverage and adhesion to repair and embellish plastic bumpers, maintaining the original bumper structure. Bumperspray offers a lasting colour and a lasting gloss. Bumperspray is scratch resistant and shock proof and is resistant to chemicals and weather influences. Motip Bumperspray is available in a 400ml aerosol and in five colours: black; middle grey; dark grey; anthracite and white.

Description	Contents	Part No.	EAN-code	PU
Bumperspray Black	400 ml	04073	8711347040735	6
Bumperspray Middle Grey	400 ml	04074	8711347040742	6
Bumperspray Dark Grey	400 ml	04075	8711347040759	6
Bumperspray Anthracite	400 ml	04076	8711347040766	6
Bumperspray White	400 ml	04085	8711347040858	6



VINYL SPRAY

Elastic vinyl spray helps the repair and renewal of vinyl, leather and artificial leather surfaces. It is available in a 400ml aerosol.

Description	Contents	Part No.	EAN-code	PU
Vinyl Spray White	400 ml	04065	8711347040650	6
Vinyl Spray Black	400 ml	04066	8711347040667	6
Silicon Remover	400 ml	00187	8711347237258	6





HEAT RESISTANT PAINTS

Heat resistant paint for treated and untreated surfaces that are exposed to very high temperatures. Resistant to petrol, chemicals and weather influences. The following colours are heat resistant to 800°C: dark anthracite; black; white; anthracite; beige; grey; brown and silver. Red is heat resistant to 300°C. All colours are available in a 400ml aerosol, with black and silver also available in a 100ml brush can.

Description	Contents	Part No.	EAN-code	PU
Dark Anthracite	400 ml	04030	8711347040308	6
Black	400 ml	04031	8711347040315	6
Silver	400 ml	04032	8711347040322	6
White	400 ml	04036	8711347040360	6
Anthracite	400 ml	04037	8711347040377	6
Beige	400 ml	04038	8711347040384	6
Grey	400 ml	04039	8711347040391	6
Brown	400 ml	04034	8711347180912	6
Red	400 ml	04040	8711347088423	6



HEAT RESISTANT CLEAR VARNISH

Heat resistant clear varnish for treated and untreated surfaces that are exposed to temperatures up to 800°C. Resistant to petrol, chemicals and weather influences.

Description	Contents	Part No.	EAN-code	PU
Clear Varnish	400 ml	04033	8711347040339	6

HAMMERFINISH PAINT

Fast drying paint with hammered effect for treated and untreated surfaces including wood, metal, aluminium, glass and plastic. Hammerfinish paint offers good coverage, is shock proof and is resistant to scratches, petrol, chemicals, thinned cleaners and weather influences.

Description	Contents	Part No.	EAN-code	PU
Blue	400 ml	04011	8711347040117	6
Green	400 ml	04012	8711347040124	6
Silver	400 ml	04013	8711347040131	6
Grey	400 ml	04014	8711347040148	6
Gold	400 ml	04015	8711347040155	6
Anthracite	400 ml	04017	8711347040179	6



CHROME PAINT

Decorative paint with metallic gloss for treated and untreated surfaces including wood, metal, aluminium, glass, stone and plastic. Chrome paint offers good coverage and excellent adhesion. Also suitable for indoor decorative purposes. Motip Chrome Paint is NOT rub-resistant nor resistant to weather influences.

Description	Contents	Part No.	EAN-code	PU
Chrome Lacquer	400 ml	04060	8711347040605	6



METALLIC PAINT

Fast drying acrylic paint for treated and untreated surfaces including wood, metal, aluminium, stone and various types of plastic. It offers excellent adhesion and is resistant to scratches and weather influences. For best results, first apply a base layer of Motip White Primer. Metallic Paint is available in a 400ml aerosol.



Description	Contents	Part No.	EAN-code	PU
Green	400 ml	04043	8711347040438	6
Blue	400 ml	04044	8711347040445	6
Red	400 ml	04045	8711347040452	6
Silver	400 ml	04046	8711347040469	6
Gold	400 ml	04047	8711347040476	6
Brown	400 ml	04048	8711347040483	6
Black	400 ml	04049	8711347040490	6
Violet	400 ml	04050	8711347040506	6

FLUORESCENT PAINT

Decorative, fluorescent acrylic paint for treated and untreated surfaces including wood, metal, aluminium, stone and various types of plastic. For best results, first apply a base layer of Motip White Primer. Fluorescent Paint is available in a 400ml aerosol with a choice of five colours: red-orange; pink; yellow; green and blue.



Description	Contents	Part No.	EAN-code	PU
Red-Orange	400 ml	04020	8711347040209	6
Pink	400 ml	04021	8711347040216	6
Yellow	400 ml	04022	8711347040223	6
Green	400 ml	04023	8711347040230	6
Blue	400 ml	04024	8711347040247	6

FIBRE PUTTY FILLED

2 component fibreglass putty for filling surface holes in steel, aluminium, wood, concrete and polyester. Fibre putty is easy to sand and has excellent filling properties. Fibre putty offers high impact resistance and may be resprayed with all paints. It is resistant to chemicals and weather influences and can be applied in layers up to 2cm in thickness.

Description	Contents	Part No.	EAN-code	PU
Fibre Putty Filled	250 g	000053	8711347000531	12
Fibre Putty Filled	1.000 g	000070	8711347000708	12



FIBRE PUTTY UNFILLED

2 component fibreglass putty for filling surface holes in steel, aluminium, wood, concrete and polyester. Fibre putty has excellent filling properties. It offers high impact resistance and may be resprayed with all paints. It is resistant to chemicals and weather influences and can be applied in layers up to 2cm in thickness.

Description	Contents	Part No.	EAN-code	PU
Fibre Putty Unfilled	250 g	000082	8711347000821	12
Fibre Putty Unfilled	1.000 g	000083	8711347000838	12



POLYESTER REPAIR SET

2 component polyester resin to be used in combination with the enclosed fibreglass mat and fibreglass fleece. To fill holes in surfaces of steel, aluminium, wood, concrete and polyester. Also suitable to create objects for which a mould is required. Polyester resin is elastic and resistant to chemicals and weather influences. MoTip Polyester Resin has excellent adhesion and is, after hardening, only mechanically sandable.

Description	Contents	Part No.	EAN-code	PU
Polyester Repair Set	250 g	000054	8711347000548	12
Polyester Repair Set	1.000 g	000154	8711347001545	6



POLYESTER PUTTY

Universal 2 component polyester putty to level irregularities in surfaces of steel, aluminium, wood, concrete and polyester. Polyester Putty is elastic and very easy to sand. Polyester putty is re-sprayable with all lacquer systems and resistant to chemicals and weather influences. MoTip Polyester Putty can be applied in layers with a thickness up to 2 centimetres.

Description	Contents	Part No.	EAN-code	PU
Polyester Putty	250 g	000051	8711347000517	12
Polyester Putty	500 g	000098	8711347000982	12
Polyester Putty	1.000 g	000052	8711347000524	6
Polyester Putty	2.000 g	000055	8711347000555	6



FINE PUTTY

2 component fine putty to level small irregularities in surfaces of steel, aluminium, wood, concrete and polyester. Fine Putty is easy to sand, elastic and resprayable with all lacquer systems. Fine Putty has a very fine structure and excellent adhesion and is resistant to chemicals and weather influences. MoTip Fine Putty can be applied in layers with a thickness up to 0.5 centimetre.



Description	Contents	Part No.	EAN-code	PU
Fine Putty	250 g	000156	8711347001569	12
Fine Putty	1.000 g	000157	8711347001576	12

BUMPER REPAIR PUTTY

2 component plastic putty to level irregularities in bumpers. Bumper repair putty is very elastic and easy to sand. Bumper repair putty can be resprayed with all paints, also powder coating, and has a very fine structure. Bumper repair putty is resistant to chemicals and weather influences and has excellent adhesion. MoTip Bumper Repair Putty can be applied in layers with a thickness up to 1 centimetre.



Description	Contents	Part No.	EAN-code	PU
Bumper Repair Putty	250 g	000080	8711347203048	12
Bumper Repair Putty	1.000 g	000081	8711347203055	12



PLASTIC REPAIR PUTTY

2 component plastic putty to level irregularities in surfaces of all types of plastic, with exception of polyethylene (PE) and polypropylene (PP). Also suitable for surfaces of steel, aluminium, wood, concrete and polyester, which are subject to vibrations. Plastic repair putty is very elastic and easy to sand. Plastic repair putty can be resprayed with all paints, also powder coating, and has a very fine structure. Plastic repair putty is resistant to chemicals and weather influences and has excellent adhesion. MoTip Plastic Repair Putty can be applied in layers with a thickness up to 1 centimetre.



Description	Contents	Part No.	EAN-code	PU
Plastic Repair Putty	420 g	000059	8711347126002	12

METAL PUTTY

2 component metal putty to level irregularities in surfaces of steel, aluminium, wood, concrete and polyester. As a result of the supplement of aluminium pigments, very easy to draw and consequently, ideal to treat larger surfaces. Metal putty is elastic and very easy to sand. Metal putty can be resprayed with all paints and resistant to chemicals and weather influences. MoTip Metal Putty can be applied in layers with a thickness up to 2 centimetres.



Description	Contents	Part No.	EAN-code	PU
Metal Putty	250 g	00086	8711347000869	12
Metal Putty	1.000 g	00087	8711347000876	12

POLYESTER RESIN

2 component polyester resin to be used in combination with fibreglass mat or fibreglass fleece. To fill holes in surfaces of steel, aluminium, wood, concrete and polyester. Also suitable to create objects for which a mould is required. Polyester resin is elastic and resistant to chemicals and weather influences. MoTip Polyester Resin has excellent adhesion and is after hardening only mechanically sandable.



Description	Contents	Part No.	EAN-code	PU
Polyester Resin	250 g	000071	8711347000715	12
Polyester Resin	1.000 g	000072	8711347000722	6

FIBREGLASS

Description	Contents	Part No.	EAN-code	PU
Fibreglass Fleece	0,5 m ²	696	8711347006960	12
Fibreglass Fleece	1,0 m ²	697	8711347006977	6
Fibreglass Mat	0,5 m ²	690	8711347006908	12
Fibreglass Mat	1,0 m ²	691	8711347006915	6
Fibreglass Tissue	0,5 m ²	694	8711347006946	12
Fibreglass Tissue	1,0 m ²	695	8711347006953	6



FINISHING PUTTY

Description	Contents	Part No.	EAN-code	PU
Finishing Putty	200 g	000057	8711347000579	1
Finishing Putty (Blister packaging)	200 g	000049	8711347128143	1



HARDENER

Description	Contents	Part No.	EAN-code	PU
Harder	50 g	000079	871134700091	1



POLYESTER PUTTY PROFI

Description	Contents	Part No.	EAN-code	PU
Polyester putty	2 kg	000056	8711347121007	6
Polyester putty soft	2 kg	000058	8711347121021	6
Polyester Fibre Putty	2 kg	000084	8711347121045	6



STONE CHIP SPRAY **MEDIUM SOLID**

Sprayable preservative against chippings to treat the underside and visible parts of motor vehicles. Stone chip spray can be resprayed with all paints and has an excellent rust prevention. Stone chip spray is resistant to weather influences and weak acids and bases, is sound-absorbing and remains flexible. MoTip Stone Chip Spray is available in three colours, black, grey and white, in an aerosol of 500 ml and a can of 1 L for application with a UBC Spray-gun.



Description	Contents	Part No.	EAN-code	PU
Sprayable Stone Chip Spray Black	500 ml	000001	8711347000012	6
Sprayable Stone Chip Spray Black	1 L	000011	8711347000111	12
Sprayable Stone Chip Spray White	500 ml	000005	8711347000050	6
Sprayable Stone Chip Spray White	1 L	000013	8711347000135	12
Sprayable Stone Chip Spray Grey	500 ml	000006	8711347000067	6
Sprayable Stone Chip Spray Grey	1 L	000012	8711347000128	12

STONE CHIP SPRAY **HIGH SOLID**

Sprayable preservative against chippings to treat the underside and visible parts of motor vehicles. Stone chip spray can be resprayed with all paints and has an excellent rust prevention. Stone chip spray is resistant to weather influences and weak acids and bases, is sound-absorbing and remains flexible. MoTip Stone Chip Spray is available in three colours, black, grey and white, in an aerosol of 500 ml and a can of 1.000 ml for application with a UBC Spray-gun.



Description	Contents	Part No.	EAN-code	PU
Sprayable Stone Chip Spray Black	500 ml	000002	8711347225187	6
Sprayable Stone Chip Spray Black	1 L	000017	8711347226917	6
Sprayable Stone Chip Spray White	500 ml	000009	8711347225163	6
Sprayable Stone Chip Spray White	1 L	000018	8711347226924	6
Sprayable Stone Chip Spray Grey	500 ml	000010	8711347225200	6
Sprayable Stone Chip Spray Grey	1 L	000019	8711347226931	6

WAXCOATING

Wax-based preservative for surfaces of treated and untreated metal. Waxcoating is resistant to weather influences, salt, water and weak acids and bases, has an excellent rust prevention and can be applied in thick layers. MoTip Waxcoating is available in an aerosol of 500 ml and a can of 1.000 ml for application with a UBC Spray-gun.



Description	Contents	Part No.	EAN-code	PU
Waxcoating Transparent Brown	500 ml	00129	8711347001293	6
Waxcoating Transparent Brown	1 L	00130	8711347001309	12
Waxcoating Black	500 ml	00135	8711347202782	6
Waxcoating Black	1 L	00136	8711347203062	12

BITUMEN BASED UNDERCOATING

Preservative to treat the underside of vehicles. Bitumen based undercoating is resistant to weather influences and weak acids and bases and has an excellent rust prevention. Bitumen based undercoating remains flexible and is sound-absorbing. MoTip Bitumen Based Undercoating is available in an aerosol of 500 ml, a can of 1.000 ml for application with a UBC Spray-gun and in brushcans of 1.300 gram and 2.500 gram.

Description	Contents	Part No.	EAN-code	PU
Bitumen Based Undercoating	500 ml	000007	8711347000074	6
Bitumen Based Undercoating	1 L	000033	8711347000333	12
Bitumen Based Undercoating	1.3 kg	000016	8711347000166	12
Bitumen Based Undercoating	2.5 kg	000173	8711347001736	6



SEALANT

Paintable grey sealant for sealing of joints, edge-to-edge joints, grooves and overlapping in car, carriage and container construction. Particularly useful for sealing welding points at the front and rear of cars and at places which are difficult to reach in the boot and interior of the vehicle. Properties: As it is very stable and processed almost fibre-free MoTip brushable sealant has an almost true-to-original surface structure. The sealant has excellent adhesive properties on untreated, primed, painted and galvanized metal sheets. The sealant dries swiftly, enabling it to be painted over quickly with all paints normally available. The sealant can stand temperatures from -25°C to +80°C. Directions for use: The surfaces must be clean, dry, grease and oilfree.

Description	Contents	Part No.	EAN-code	PU
Sealer	750 ml	07505	8711347190478	6



HOLLOW SECTION WAX

Preservative with excellent adhesion to treat the hollow spaces in vehicle bodywork. Hollow section wax is resistant to weather influences and weak acids and bases and has an excellent rust prevention. Hollow section wax has good penetrating properties. MoTip Hollow Section Wax is available in an aerosol of 500 ml and a can of 1.000 ml for application with a UBC Spray-gun.

Description	Contents	Part No.	EAN-code	PU
Hollow Section Wax	500 ml	000046	8711347000463	6
Hollow Section Wax	1 L	000034	8711347000340	12



CAR CARE



COCKPITSPRAY

Spray with excellent cleansing properties, to clean, protect and embellish the dashboard and other plastic parts in the car. Cockpitspray semi gloss has a subtle scent and gives a lasting, silky gloss. Cockpitspray semi gloss is dirt repellent, silicone-free and antistatic. MoTip Car Care Cockpitspray Semi Gloss has a directed jetspray and a 360° valve.

Description	Contents	Part No.	EAN-code	PU
Cockpitspray Lavender	600 ml	000780	8711347228737	6
Cockpitspray Orange	600 ml	000781	8711347228751	6
Cockpitspray Vanilla	600 ml	000782	8711347228775	6
Cockpitspray Potpourri	600 ml	000783	8711347228799	6
Cockpitspray Apple	600 ml	000784	8711347228812	6
Cockpitspray Cranberry	600 ml	000785	8711347228773	6



COCKPITSPRAY SEMI GLOSS

Spray with excellent cleansing properties, to clean, protect and embellish the dashboard and other plastic parts in the car. Cockpitspray semi gloss has a subtle scent and gives a lasting, silky gloss.

Description	Contents	Part No.	EAN-code	PU
Cockpit Semi Gloss	600ml	000701	8711347212804	6



COCKPITSPRAY FOAM WATERBASED

Spray with excellent cleansing properties, to clean, protect and embellish the dashboard and other plastic parts in the car. Cockpitspray Foam is a waterbased foam which leaves no residue, not even on windscreens.

Description	Contents	Part No.	EAN-code	PU
Cockpit Foam 'Waterbased'	600ml	000702	8711347218929	6

COCKPITSPRAY HIGH GLOSS

Spray with excellent cleansing properties, to clean, protect and embellish the dashboard and other plastic parts in the car. Cockpitspray High Gloss has a subtle scent, is dirt repellent and antistatic and gives a lasting gloss.

Description	Contents	Part No.	EAN-code	PU
Cockpit Spray 'High Gloss	600ml	000703	8711347218943	6

INTERIOR CLEANER

Very effective cleaner for the interior. MoTip Car Care Interior Cleaner has high cleansing properties and has a subtle scent.

Description	Contents	Part No.	EAN-code	PU
Interior Cleaner	500 ml	000755	8711347221134	6

AIR REFRESHER 'ONE SHOT'

Powerful spray to mask unpleasant smells in small and large rooms. One shot air refresher is very efficient and very effective. MoTip Car Care One Shot Air Refresher has excellent masking properties and has a lasting effect.

Description	Contents	Part No.	EAN-code	PU
Air Refresher 'One Shot'	600ml	000704	8711347212866	6

AIRCO REFRESHERS

Very effective spray to refresh and clean the air conditioning and air circulation system in vehicles. MoTip Car Care Airco Refresher is very easy to apply and has subtle scent.



Description	Contents	Part No.	EAN-code	PU
Air Refresher Orange	150 ml	000720	8711347220151	10
Air Refresher Lavender	150 ml	000721	8711347220175	10
Air Refresher Lemon	150 ml	000722	8711347220199	10



DISPLAY AIRCO REFRESHER

User-friendly, water repellent spray for windscreens, mirrors and visors. MoTip Car Care Rain Away reduces the adhesion of dirt and contains silicones.

Description	Contents	Part No.	EAN-code	PU
Display Airco Refresher	12 X 150ml	Dpcc700	8711347221080	1





WHEEL CLEANER

User-friendly, intensive cleaner for rims and hubcaps. Wheel cleaner is an effective foam with excellent cleansing properties and excellent vertical stability. MoTip Car Care Wheel Cleaner gives a glossy result and has a 360° valve.

Description	Contents	Part No.	EAN-code	PU
Wheel Cleaner	600ml	000713	8711347212781	6



TYRE SHINE

Tyre Shine to intensify the colour of car tyres. Tyre shine contains silicones and gives a glossy result. MoTip Car Care Tyre Shine protects against weather influences and is pH-neutral.

Description	Contents	Part No.	EAN-code	PU
Tyre Shine	600ml	000711	8711347212842	6



TYRE REPAIR

Rubber based spray to execute emergency repairs on tubeless tyres. MoTip Car Care Tyre Repair can be used without removing the tyre.

Description	Contents	Part No.	EAN-code	PU
Tyre Repair	500ml	000712	8711347218967	6



WHEEL CLEANER

Intensive cleaner for rims and hubcaps. MoTip Car Care Wheel Cleaner is user-friendly and has excellent cleansing properties.



Description	Contents	Part No.	EAN-code	PU
Wheel Cleaner	500ml	000732	8711347220250	6



WHEEL PROTECT WAX

Protect Wax for rims and hubcaps. Wheel protect wax gives a glossy result and reduces the adhesion of dirt. MoTip Car Care Wheel Protect Wax is free from solvents and pH-neutral and contains silicones.

Description	Contents	Part No.	EAN-code	PU
Wheel Protect 'Wax'	500ml	000733	8711347220274	6

GLASS CLEANER

User-friendly spray to clean windscreens. Glass cleaner has high dissolving properties and leaves no residue. MoTip Car Care Glass Cleaner is a slightly basic, cleansing and de-greasing foam.



Description	Contents	Part No.	EAN-code	PU
Glass Cleaner	600ml	000706	8711347212828	6



ANTI CONDENS

Spray to prevent condensing of windscreens and windows. MoTip Car Care Anti Condens is free from solvents and is for interior and exterior use.

Description	Contents	Part No.	EAN-code	PU
Anti Condens	500ml	000730	8711347220212	6



GLASS CLEANER

Cleaner for windscreens and mirrors. MoTip Car Care Glass Cleaner has excellent cleansing properties and is slightly basic.

Description	Contents	Part No.	EAN-code	PU
Glass Cleaner	500ml	000731	8711347220236	6



RAIN AWAY

User-friendly, water repellent spray for windscreens, mirrors and visors. MoTip Car Care Rain Away reduces the adhesion of dirt and contains silicones.

Description	Contents	Part No.	EAN-code	PU
Rain Away	500ml	000734	8711347220298	6





INSECT CLEANERS

User-friendly, intensive cleaner to remove insects. Insect cleaner has excellent cleansing properties and contains tenside. MoTip Car Care Insect Cleaner is slightly basic and is safe for plastic and lacquered parts.



Description	Contents	Part No.	EAN-code	PU
Insect Cleaner	600 ml	000705	8711347219001	6



SHAMPOO

Shampoo with excellent cleansing properties to clean motor vehicles. MoTip Car Care Shampoo is highly concentrated and free from solvents.

Description	Contents	Part No.	EAN-code	PU
Shampoo	2 X 500 ml	000756	8711347221868	12



SUPER SHAMPOO & WAX

Shampoo with wax to clean and protect motor vehicles. Super shampoo & wax has excellent cleansing properties and gives a glossy result. Super shampoo & wax protects against weather influences and reduces the adhesion of dirt. MoTip Car Care Super Shampoo & Wax is free from solvents and is highly concentrated.

Description	Contents	Part No.	EAN-code	PU
Shampoo & Wax	500 ml	000743	8711347220397	6



TAR & RESIN REMOVER

Spray, with excellent dissolving properties, to remove tar, bitumen, asphalt and resin. MoTip Car Care Tar & Resin Remover is easy to apply and pH-neutral.

Description	Contents	Part No.	EAN-code	PU
Tar & Resin	600 ml	000765	8711347228898	6



SPEED WAX

Very effective, user-friendly spray to obtain a lasting gloss. Suitable to treat lacquered, plastic and chrome-plated parts. Speed wax is ideal for larger surfaces. Speed wax is water repellent and gives a lasting gloss. Speed wax reduces the adhesion of dirt and protects against weather influences. MoTip Car Care Speed Wax is pH-neutral and non-polishing and contains silicones.

Description	Contents	Part No.	EAN-code	PU
Speed Wax	600 ml	000710	8711347218868	6

SCRATCH AWAY

Polish paste to remove small, superficial damages in lacquered surfaces. Scratch away restores the original colour and maintains the gloss. MoTip Car Care Scratch Away has high polishing properties and contains silicones.

Description	Contents	Part No.	EAN-code	PU
Scratch Away	250 ml	000745	8711347220434	6



CHROME POLISH

Polish, with excellent cleansing properties, to protect and clean chrome parts. Chrome polish protects against weather influences and gives a glossy result. MoTip Car Care Chrome Polish reduces the adhesion of dirt, is free from solvents and contains silicones.

Description	Contents	Part No.	EAN-code	PU
Chrome Polish	500 ml	000742	8711347220373	6



SUPER FAST WAX

User-friendly maintenance product to protect and restore the gloss of lacquered surfaces, both metallic and non-metallic.

Description	Contents	Part No.	EAN-code	PU
Super Fast Wax	500 ml	000744	8711347220410	6



COLOUR RENOVATOR

Polish to restore the gloss and the colour of weathered lacquered surfaces, both metallic and non-metallic. Colour renovator has excellent polishing properties and protects against weather influences. Colour renovator gives a glossy result and restores the original colour.

Description	Contents	Part No.	EAN-code	PU
Colour Renovator	500 ml	000741	8711347220359	6



POLISH & WAX

Slightly polishing, user-friendly maintenance product to protect and restore the gloss of lacquered surfaces, both metallic and non-metallic.

Description	Contents	Part No.	EAN-code	PU
Polish & Wax	500 ml	000740	8711347220335	6



COLOUR POLISHES

Polish to mask superficial scratches in lacquered surfaces, both metallic and non-metallic. Gives a glossy result and restores the original colour. Colour polish is lightly polishing and protects against weather influences.

Description	Contents	Part No.	EAN-code	PU
Colour Polish White	500 ml	000746	8711347220458	6
Colour Polish Black	500 ml	000747	8711347220472	6
Colour Polish Blue	500 ml	000748	8711347220496	6
Colour Polish Light Red	500 ml	000749	8711347220519	6
Colour Polish Grey	500 ml	000750	8711347220533	6
Colour Polish Green	500 ml	000751	8711347220557	6
Colour Polish Red	500 ml	000752	8711347220571	6
Scratch Away	250 ml	000745	8711347220434	6





LEATHER CONDITIONER

User-friendly maintenance product to clean and protect upholstery of leather and semi leather. Leather conditioner reduces the adhesion of dirt and conditions leather. Leather Conditioner spray contains Vaseline and is silicone free. Leather Conditioner flacon is free from solvents and contains silicones.

Description	Contents	Part No.	EAN-code	PU
Leather Conditioner	600ml	000708	8711347218882	6
Leather Conditioner	500ml	000754	8711347220618	6



TEXTILE CLEANER

Effective, fast-drying foam to clean fabrics. Textile cleaner is a user-friendly, dry, cleansing foam. MoTip Car Care Textile Cleaner has high dissolving properties and a subtle scent

Description	Contents	Part No.	EAN-code	PU
Textile Cleaner	600ml	000707	8711347218844	6



RUBBER & PLASTIC CONDITIONER

User-friendly spray for exterior parts of vehicles. To condition rubber parts. And to restore the gloss and intensify the colour of plastic parts. Plastic & rubber conditioner gives a lasting gloss and is very suitable to remove residue of polishes. Plastic & rubber conditioner prevents freezing and drying out of rubber parts and protects against weather influences.

Description	Contents	Part No.	EAN-code	PU
Rubber & Plastic Conditioner	600 ml	000709	8711347218820	6



BUMPER BLACK

Maintenance product for black, plastic bumpers, to restore the colour and the gloss. Bumper black protects against weather influences and reduces the adhesion of dirt. MoTip Car Care Bumper Black contains silicones and is free from solvents.

Description	Contents	Part No.	EAN-code	PU
Bumper Black	500 ml	000753	8711347220595	6





V-BELT SPRAY

Spray with excellent adhesion to protect V-Belts and to remedy and prevent slipping. V-belt spray is dilatant (increases in volume and viscosity) and user-friendly and gives lasting protection. MoTip V-Belt Spray delays the wear, conditions V-belts and is resistant to weather influences.

Description	Contents	Part No.	EAN-code	PU
V-Belt Spray	500 ml	090102	8711347226382	12



CABLE PROTECT

Transparent spray with excellent adhesive properties to stop martens/small mammals from damaging cables and wires. The treated surfaces take on a sticky protective film and Cable Protect can even be applied to moving parts. It gives lasting protection, is odourless and resistant to weather influences, weak acids and bases.

Description	Contents	Part No.	EAN-code	PU
Cable Protect	500 ml	090103	8711347226405	12



IMPREGNATION SPRAY

Protective spray to keep material and leather dirt-free. An invisible protective film is formed, which is water-repellent and breathable. It offers lasting protection and is user-friendly.

Description	Contents	Part No.	EAN-code	PU
Impregnation Spray	500 ml	090104	8711347226429	12



ANTI CORROSION PRIMER

Fast drying, lead free red oxide primer to treat untreated surfaces of ferro-metal. Suitable as Pre-treatment for respraying with air drying alkyd lacquer systems. Anti-corrosion primer has excellent coverage, filling properties and adhesion. MoTip Anti Corrosion is weldable and easy to sand and has excellent corrosion prevention.

Description	Contents	Part No.	EAN-code	PU
Anti-Corrosion Primer	500 ml	090106	8711347226467	12



SILICONE SPRAY

Silicone spray to lubricate and protect plastic or rubber parts. Silicone spray is water-repellent, pH-neutral and resistant to weather influences and weak acids and bases. Silicone spray prevents freezing and drying out of rubber parts and creaking and squeaking of plastic parts. Silicone spray has outstanding mechanical and thermal stability. MoTip Silicone Spray has a directed jetspray and is resistant to temperatures of - 50°C up to + 200°C.

Description	Contents	Part No.	EAN-code	PU
Silicone Spray	500 ml	090107	8711347226481	12

ELECTRO PROTECT

Electro preservative offers good penetration to help avoid starting problems caused by moisture. Electro protect is water and moisture repellent. It is also resistant to salt, weak acids, bases and is pH-neutral. MoTip Electro Protect offers excellent adhesion and corrosion protection.

Description	Contents	Part No.	EAN-code	PU
Electro Protect	500 ml	090108	8711347226504	12



PTFE DRY

A dry surface lubricant that removes oil and grease from metal and plastic parts. It has a very low friction factor preventing wear and sticking, offers excellent adhesion and is resistant to weather influences. Suitable for parts that are subjected to light loads and low speed. It can be used as a release agent for moulds when the use of silicone is not required.

Description	Contents	Part No.	EAN-code	PU
PTFE Dry	500 ml	090201	8711347226245	12



PTFE OIL

Universal lubricant with outstanding mechanical and thermal stability to treat mechanical parts of metal and plastic. PTFE oil has a very low friction factor, a fine structure (pPart size approximately 5 micrometer) and excellent adhesion. PTFE oil is resistant to weather influences and weak acids and bases, water-repellent and pH-neutral. PTFE oil prevents wear and sticking. MoTip PTFE Oil is resistant to temperatures of - 50°C up to + 250°C.

Description	Contents	Part No.	EAN-code	PU
PTFE Oil	500 ml	090203	8711347226269	12



WHITE GREASE

Spray grease has excellent adhesion and high viscosity to lubricate mechanical parts of metal or plastic. White grease has outstanding mechanical and thermal stability and is resistant to weather influences and weak acids and bases. White grease is water-repellent and pH-neutral. White grease contains PTFE (polytetrafluorethen) and prevents wear and sticking. MoTip White Grease is resistant to temperatures of - 30°C up to + 160°C.

Description	Contents	Part No.	EAN-code	PU
White Grease	500 ml	090204	8711347226283	12





MULTISPRAY

A universal oil that lubricates, protects and cleanses metal and plastic parts. It offers excellent penetration, is moisture repellent, prevents rust, removes oil, grease, wax, tar and leaves a protective film.

Description	Contents	Part No.	EAN-code	PU
Multispray	500 ml	090206	8711347226320	12



INDUSTRIAL CHAIN GREASE

Spray to lubricate chain-driven transmissions, which are subject to heavy loads. Industrial chain grease can be processed like oil, with the properties of grease.

Description	Contents	Part No.	EAN-code	PU
Industrial Chain Grease	500 ml	090205	8711347226306	12



TEXTILE CLEANER

An effective, fast-drying foam for cleaning fabrics. Textile Cleaner is user-friendly, neutralises unpleasant odours and possesses a subtle scent.

Description	Contents	Part No.	EAN-code	PU
Textile Cleaner	500 ml	090500	8711347225781	12



COLD DEGREASER

Emulsifying cleaner to remove a-polar preservatives, like oil, grease, wax, undercoating and tar, from treated and untreated surfaces of metal. Cold degreaser has high dissolving properties and leaves no residue. MoTip Cold Degreaser can be rinsed with water (emulsifying) and is non corrosive.

Description	Contents	Part No.	EAN-code	PU
Cold Degreaser	500 ml	090501	8711347225668	12

TYRE CLEANER

A foam that cleans, conditions and intensifies the colour of tyres. It is user-friendly, leaves a gloss finish, protects against the weather and can even be applied to wet tyres. Tyre Cleaner contains silicones and has a low solvent content.

Description	Contents	Part No.	EAN-code	PU
Tyre Cleaner	500 ml	090502	8711347225828	12



STAINLESS STEEL CLEANER

A spray for the cleaning and protection of stainless steel parts. Its unique formula enables a thin protective film to be formed, which prevents the build-up of dirt.

Description	Contents	Part No.	EAN-code	PU
Stainless Steel Cleaner	500 ml	090503	8711347225804	12



GLASS CLEANER

An easy to use degreasing foam spray for windscreens and mirrors.

Description	Contents	Part No.	EAN-code	PU
Glass Cleaner	500 ml	090504	8711347225880	12



CONTACT CLEANER

Spray with high dissolving properties to clean electrical contacts. Contact cleaner is non-conductive and non-corrosive and leaves no residue. MoTip Contact Cleaner has a powerful jetspray and can be used in various positions.

Description	Contents	Part No.	EAN-code	PU
Contact Cleaner	500 ml	090505	8711347225644	12



ENGINE CLEANER

Engine Cleaner has high dissolving properties without leaving a residue. It is also non-conductive and non-corrosive.

Description	Contents	Part No.	EAN-code	PU
Engine Cleaner	500 ml	090506	8711347225606	12





AIRCO CLEANER

A foam for cleaning air-conditioning systems in motor vehicles. It provides a subtle scent as well as lasting prevention of odours.

Description	Contents	Part No.	EAN-code	PU
Aircleaner	500 ml	090508	8711347225842	12



INDUSTRIAL CLEANER

A universal cleaner that removes contaminants from treated and untreated metal and various plastics. It has high dissolving properties, leaves no residue, and is non-conductive and non-corrosive.

Description	Contents	Part No.	EAN-code	PU
Industrial Cleaner	500 ml	090509	8711347225927	12



CARBURETTOR CLEANER

Cleaner for carburettors and valves without the need for disassembly. It has high dissolving properties, leaves no residue, is non-corrosive and has a precise jet-spray.

Description	Contents	Part No.	EAN-code	PU
Carburettor Cleaner	500 ml	090510	8711347225620	12



MULTI FOAM

Universal cleaning foam with high dissolving properties for light dirt. Multi foam cleaner is user-friendly and very effective and has a subtle scent. MoTip Multi Foam Cleaner to remove deposits of smoke, ink and grease.

Description	Contents	Part No.	EAN-code	PU
Multi Foam	500 ml	090511	8711347225866	12



CITRUS CLEANER

For the removal of fat, tar, grease, wax, ink, sticker and glue residue from treated and untreated surfaces including metal, wood, stone and various plastics.

Description	Contents	Part No.	EAN-code	PU
Citrus Cleaner	500 ml	090513	8711347225941	12



POWER BRAKE CLEANER 750 ML

Brake cleaner with excellent dissolving properties. Brake Cleaner leaves no residue and is non-conductive and non-corrosive. MoTip Brake Cleaner has a powerful jetspray and can be used in various positions.

Description	Contents	Part No.	EAN-code	PU
Brake Cleaner	750 ml	090514	8711347222070	12



DPF CLEANER

Tool to loosen and remove ash deposits in diesel-pPart filter systems, without disassembly. DPF Cleaner is fast-acting and is non-corrosive. MoTip DPF Cleaner is free from solvents and non-flammable.

Description	Contents	Part No.	EAN-code	PU
DPF Cleaner	500 ml	090515	8711347228836	12



EGR CLEANER

This product is a fast-acting exhaust gas recirculation cleaner, dissolving deposits in EGR valves, air intake systems, manifolds and inlet valves. It restores engine air flow and improves power and acceleration whilst reducing exhaust smoke. No residue is left and EGR Cleaner prevents resin deposits. The spray can has a 360 valve.

Description	Contents	Part No.	EAN-code	PU
EGR Cleaner	500 ml	090516	8711347228850	12



POWER BRAKE CLEANER

Brake cleaner with excellent dissolving properties. Brake Cleaner leaves no residue and is non-conductive and non-corrosive. MoTip Brake Cleaner has a powerful jetspray and can be used in various positions.

Description	Contents	Part No.	EAN-code	PU
Power Brake Cleaner	500 ml	090563	8711347225767	12





COLD CHEWING GUM FREEZER

Effective tool to remove chewing gum from carpets, upholstery and pavement. Chewing gum freezer briefly decreases the temperature to -40°C. MoTip Chewing Gum Freezer is user-friendly and has a directed jetspray

Description	Contents	Part No.	EAN-code	PU
Chewing Gum Freezer	500 ml	090402	8711347226009	12



GASKET REMOVER

Spray for the fast and easy removal of dried adhesives and seals, as well as hardened sealing material from car and machine parts. Motip Gasket Remover has excellent dissolving properties, is non-conductive, non-corrosive, is highly viscous, and user-friendly with a precise spray.

Description	Contents	Part No.	EAN-code	PU
Gasket Remover	500 ml	090403	8711347225705	12



ANTI-WELDING SPRAY

A spray that helps prevent welding splatter from adhering to the area around the welding zone. It is non-flammable, silicone-free, and non-corrosive. Anti-Welding offers great coverage, can be removed with water and has a misty spray pattern.

Description	Contents	Part No.	EAN-code	PU
Anti-Welding Spray	500 ml	090404	8711347226061	12



QUICK START

An effective product for eliminating internal combustion engine starting problems.

Description	Contents	Part No.	EAN-code	PU
Quick Start	500 ml	090405	8711347226085	12



LEAK DETECTOR

Spray to trace leakages in gas pipes. Leak detector is non-flammable and non-corrosive. Leak detector can be removed with water and is environmental friendly. Leak detector is slightly foaming and slightly basic. MoTip Leak Detector is DVGW certified, number NG/5170BR0105.

Description	Contents	Part No.	EAN-code	PU
Leak Detector	400 ml	090406	8711347226047	12

CUT & DRILL LUBRICANT

Oil to prevent over-heating of metals in cutting and drilling activities. Cut and drill lubricant protects and lubricates the tool and reduces wear of the tool. MoTip Cut and Drill Lubricant is silicone free and non-corrosive.

Description	Contents	Part No.	EAN-code	PU
Cut & Drill Lubricant	500 ml	090407	8711347225965	12



DUST REMOVER

A high pressure product that loosens and removes dirt from hard to reach places. It is non-flammable, odourless and leaves no residue. It is easy to use with a powerful and precise jet-spray

Description	Contents	Part No.	EAN-code	PU
Dust Remover	360 ml	090408	8711347225743	12



FREEZER ELECTRONIC

Effective, non-flammable tool to trace cracks in printed circuit boards. Freezer electronic can be used in various positions. MoTip Freezer Electronic briefly decreases the temperature to -55°C and has a directed jetspray.

Description	Contents	Part No.	EAN-code	PU
Freezer Electronic	360 ml	090409	8711347225682	12



PAINT REMOVER

Very effective tool to remove old layers of lacquer on surfaces of stone, concrete, asphalt, metal and wood. MoTip Paint Remover has a gel structure and is user-friendly.

Description	Contents	Part No.	EAN-code	PU
Paint Remover	500 ml	090410	8711347225729	12





BLACK OIL

This grease prevents the wear and sticking of threaded connections that are subject to heavy workloads. Black Oil is water repellent, prevents corrosion, and is resistant to weather influences, weak acids and bases. It has a precise jet-spray and a 360 degree valve.

Description	Contents	Part No.	EAN-code	PU
Black Oil	500 ml	090300	87113472255836	12



COPPER SPRAY

Spray with a high copper content to prevent wear and sticking of screwed connections which are exposed to very high temperatures. Copper grease has high thermal stability and is corrosion preventive. MoTip Copper Grease is resistant to temperatures of -40°C up to +1.100°C.

Description	Contents	Part No.	EAN-code	PU
Copper Grease	500 ml	090301	8711347226122	12



VASELINE SPRAY

Universal, transparent, lubricant and preservative with excellent adhesion. Vaseline is water-repellent, pH-neutral and resistant to weather influences and weak acids and bases.

Description	Contents	Part No.	EAN-code	PU
Vaseline Spray	500 ml	090302	8711347226146	12



PENETRATING OIL

This oil has good penetrative properties allowing it to loosen rusted parts. It contains graphite and MoS₂, is moisture repellent and prevents rusting.

Description	Contents	Part No.	EAN-code	PU
Penetrating Oil	500 ml	090303	8711347226160	12



GLUE

Glue for both permanent and temporary adhesion. Suitable to glue paper, cardboard, wood, textile and various types of plastic.

Description	Contents	Part No.	EAN-code	PU
Glue	400 ml	090304	8711347226184	12

SHOCK OIL

Effective tool to loosen rusted parts. As a result of the fierce decrease in temperature to -30°C and the lubricating properties of shock oil, the screwed connection can be loosened.

Description	Contents	Part No.	EAN-code	PU
Shock Oil	500 ml	090305	8711347226108	12



FREEZER

MoTip Freezer briefly decreases temperature to -50°C to loosen pressed connections and has a precise jet-spray.

Description	Contents	Part No.	EAN-code	PU
Freezer	500 ml	090306	8711347226207	12



CERAMIC GREASE

Metal free ceramic grease with excellent adhesion, to treat parts which are subject to heavy workload and/or which are exposed to very high temperatures.

Description	Contents	Part No.	EAN-code	PU
Ceramic Grease	500 ml	090307	8711347226221	12



TAR SPRAY

Lubricant and preservative to prevent wear and sticking of screwed connections which are subject to heavy workload. Tar Spray gives lasting protection, is water-repellent and resistant to weather influences and weak acids and bases. MoTip Tar Spray has excellent adhesion and excellent corrosion prevention.

Description	Contents	Part No.	EAN-code	PU
Tar Spray	500 ml	090308	8711347228973	12



ASSEMBLY GREASE

Grease with excellent adhesion to prevent wear and sticking of screwed connections which are subject to heavy workload. Assembly grease is water-repellent and has an excellent corrosion prevention.

Description	Contents	Part No.	EAN-code	PU
Assembly Grease	500 ml	090310	8711347226344	12



ALU PRESSURE CAN

Refillable Alu Pressure can to process MoTip active substances. Minimum pressure 5 bar, maximum pressure 10 bar (compressed air). Suitable for 500 ml active substance. The following active substances can be processed: Copper Grease (can of 5 litre), Brake Cleaner (can of 5 litre and drum of 25 litre), Multispray (can of 5 litre) and Multi-Purpose Cleaner (can of 5 litre).

Description	Contents	Part No.	EAN-code	PU
Alu Pressure Can	500 ml	V05000	8711347196753	1



DRUMS

Description	Contents	Part No.	EAN-code	PU
Brake Cleaner	60L	V60563	8711347235087	1
Brake Cleaner	25L	V25563	8711347190874	1
Citrus Cleaner	25L	V25529	8711347229000	1
Citrus Cleaner	5L	V05529	8711347228720	1
Brake Cleaner	5L	V05563	8711347190881	1
Multi-Purpose Cleaner	5L	V05584	8711347194896	1
Multispray	5L	V05578	8711347194872	1
Copper Grease	5L	V05561	8711347194889	1
Cut & Drill Lubricant	5L	V05583	8711347220038	1
Sealing Faucet 25/60L		SF0001	8711347204625	1



BRAKE CALIPER SET

Set consisting of a brake caliper cleaner and a heat resistant 2-component lacquer with hardener. The brake caliper cleaner, with high dissolving properties, was especially developed to clean brake pads. The lacquer has good corrosion prevention and a lasting gloss. The lacquer is scratch free and shock proof, resistant to petrol, chemicals and weather influences and reduces the adhesion of dirt.



Description	Contents	Part No.	EAN-code	PU
Brake Caliper Set Racing Red	500 ml	728952	4048500728952	1

BRAKE CALIPER SET

A paint for highlighting brakes. It has good filling ability, provides a lasting gloss, and is shockproof and resistant to petrol, chemicals, weather influences, rust and dirt. MoTip Tuning Line Brake Caliper Spray is available in four colours.



Description	Contents	Part No.	EAN-code	PU
Silver	400 ml	04096	8711347194940	6
Yellow	400 ml	04097	8711347040971	6
Red	400 ml	04098	8711347040988	6
Blue	400 ml	04099	8711347058617	6

BACKLIGHT

A transparent paint to highlight rear lights. It leaves a lasting gloss, it is shock-proof, resistant to scratches, petrol, chemicals and weather influences. MoTip Tuning Line Backlight is available in two colours.



Description	Contents	Part No.	EAN-code	PU
Backlight Black	400 ml	00260	8711347011728	6
Backlight Red	400 ml	00261	8711347011735	6
Backlight Remover	150 ml	00164	8711347182305	6

ENGINE PAINT

An engine block paint with good filling properties. The paint is shock proof and resistant to scratches, petrol, chemicals, weather influences and temperature fluctuations. It is also elastic, prevents rust, leaves a lasting gloss and reduces dirt build-up. It is available in 5 different colours. MoTip Tuning Line Engine Paint is available in five colours.

Description	Contents	Part No.	EAN-code	PU
Engine Paint Red	400 ml	04091	8711347040919	6
Engine Paint Black	400 ml	04092	8711347040926	6
Engine Paint Aluminium	400 ml	04093	8711347040933	6
Engine Paint Blue	400 ml	04094	8711347040940	6
Engine Paint Green	400 ml	04095	8711347055432	6



REMOVABLE COATING

Special lacquer to create a removable lacquer film. Suitable to treat smooth, non-absorbing surfaces, like blank metal, aluminium, glass and surfaces treated with 2K lacquers. MoTip Removable Coating is oversprayable but not suitable for surfaces treated with 1K lacquer systems.

Description	Contents	Part No.	EAN-code	PU
Black Matt	500 ml	04301	8711347230815	6
Black Gloss	500 ml	04302	8711347230839	6
White Gloss	500 ml	04303	8711347230853	6
Carbon Gloss	500 ml	04304	8711347230877	6
Green Gloss	500 ml	04305	8711347230891	6
Orange Gloss	500 ml	04306	8711347230914	6
Transparent Gloss	500 ml	04307	8711347245147	6
Blue Gloss	500 ml	04308	8711347245161	6
Red Gloss	500 ml	04309	8711347245185	6
Fluor Yellow	500 ml	04310	8711347245208	6





view online **catalogue**



www.motip.com

MOTIP DUPLI B.V.
P.O. Box 200
8470 AE Wolvega
The Netherlands
Tel.: +31 (0)561 69 44 00
info@nl.motipdupli.com



leading in spray solutions